

Data Sheet

Reference No.: 42994

Surface Grinder, horizontal

Brand: MÄGERLE
 Model: MGC 180.32.45
 YoM, approx.: 1992 used
 Reconditioned:
 Controls: CNC controls SIEMENS 3 G



Working Range Surface Grinding

grinding length:	760 mm
vertical travel:	450 mm
workpiece height (max) with largest wheel:	300 mm

table (surface grinding)

table surface (left-right):	760 mm
table surface (front-back):	325 mm
magnetic table: yes	

Spindlestock Grinding Spindle

X-axis travel:	1800 mm
Y-axis travel:	320 mm
Z-axis travel:	450 mm
spindle revolutions (max):	4000 /min

Grinding Tool

type of grinding tool: wheel	
diameter (max):	400 mm
borehole: diameter:	127 mm
width:	100 mm

Axis Drives

traverse velocity X (max):	30000 mm/min
----------------------------	--------------

Dressing Device

dressing tool: profiled rolls

Electrical specifications

mains voltage:	400 V
mains frequency:	50 Hz

Dimensions / weights

space requirements -left/right-:	6600 mm
space requirements -front/back-:	5700 mm
total height:	3200 mm

Additional Information:

Machine features:

- 2 pallet changing table $\pm 180^\circ$ version (hyd.clamped). (2x 760x325mm)
- grinding length 760mm (longitudinal stroke 1800mm)

Machine equipment:

- Full shuttering
- 2 magnetic plates
- dressing rolls $\varnothing 130 \times 125$ mm (400-4000rpm)
- machine enabled for creep grinding

Dismantling and loading cost of 5'500 EUR will be charged separately

Seller:

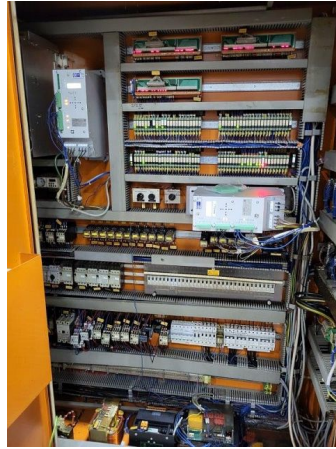
ProdEq Trading GmbH
 Frank Goedicke
 Reckholder 1, 9527 Niederhelfenschwil, Switzerland
 +41 71 948 70 60
 frank.goedicke@prodeq.ch

Photos & Documents

Reference No.: 42994



Control Panel



E Cabinet Inside



Aspiration Unit



Rear View



E Cabinet Inside