

## Data Sheet

Reference No.: 44196

## Tube Welding Line

Brand: ABBEY  
 Model:  
 YoM, approx.: 2001 used  
 Reconditioned:  
 Controls: PLC SIEMENS



### Feedstock Steel Strip

sheet width max.:	221 mm
sheet width min.:	58 mm
sheet thickness max.:	8 mm
sheet thickness min.:	1 mm
exterior coil diameter max.:	2100 mm
exterior coil diameter min.:	1600 mm
internal coil diameter max.:	610 mm
internal coil diameter min.:	508 mm
coil weight max.:	6000 kg

### Product (profile, tube)

external diameter min.:	22 mm
external diameter max.:	65 mm
length min.:	4500 mm
length max.:	10000 mm

### Line Characteristics

Forming Process:	rollforming
welding process:	HF inductive
sawing process:	travelling
speed max.:	100 m/min
feedstock transport direction:	left to right

### Additional Information:

Line consists of:

- Band Preparation VAI-SEUTHE BV 200-8 (YoM 2001, Siemens S7-400)
- Welding Unit ABBEY (YoM 2001, Allen-Bradley)
- Hot Saw VAI-SEUTHE TS90-K11/W75 (YoM 2001, Siemens S7-300)
- FollowUp Processing VAI-SEUTHE ADJ65 (YoM 2001, Siemens S7-400)
- Process visualisation (Windows PC)

Line Specifications:

- max. yield strength: 600 N/mm<sup>2</sup>
- max. tensile strength: 800 N/mm<sup>2</sup>
- strand alignment: bottom-line

Strip Preparation VAI-SEUTHE BV 200-8

- incl. double decoiler, coil opener, straightening unit, strip shear, cross welding machine, annealing station, infeed driver, strip loop, outfeed driver and strip sling
- strip edge planer: 0 degrees, 5 degrees
- max. speed: 250 m/min (without straightener)
- max. speed: 200 m/min (with straightener)

Core Unit ABBEY(forming unit, welding machine and calibrating unit):

- incl. Ebbey Etna, VAI Seuthe RS65/8.0-100, Elotherm Eloweld 500
- Welding tube diameter ratio: 70:1 to 6:1
- max. HF power: 450 kW

### Seller:

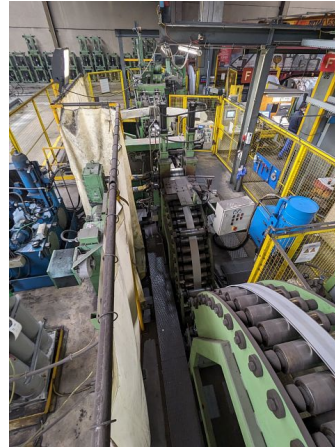
ProdEq Trading GmbH  
 Marc Schönenberger  
 Reckholder 1, 9527 Niederhelfenschwil, Switzerland  
 +41 71 948 70 60  
 marc.schoenenberger@prodeq.ch

**Photos & Documents**

Reference No.: 44196



Übersicht Bandanlage



Schleife



Haspel



Schlaufensteuerung



Band Stoss schweißen



Übersicht Schweißanlage