

Características técnicas:

Nº de referencia 44196

Tube Welding Line

Marca: ABBEY
 Modelo:
 Año de fabricación: 2001 used
 Reconstruida:
 Control: PLC SIEMENS



Feedstock Steel Strip

Ancho de banda máx.:	221 mm
sheet width min.:	58 mm
Espesor máx.:	8 mm
Espesor mín. de fleje:	1 mm
exterior coil diameter máx.:	2100 mm
exterior coil diameter mín.:	1600 mm
internal coil diameter máx.:	610 mm
internal coil diameter mín.:	508 mm
coil weight máx.:	6000 kg

Product (profile, tube)

external diameter min.:	22 mm
external diameter máx.:	65 mm
Largo min.:	4500 mm
length máx.:	10000 mm

Line Characteristics

Forming Process:	rollforming
welding process:	HF inductive
sawing process:	travelling
Velocidad máx.:	100 m/min
Dirección de alimentación:	Izquierda a derecha

Información adicional:

Line consists of:

- Band Preparation VAI-SEUTHE BV 200-8 (YoM 2001, Siemens S7-400)
- Welding Unit ABBEY (YoM 2001, Allen-Bradley)
- Hot Saw VAI-SEUTHE TS90-K11/W75 (YoM 2001, Siemens S7-300)
- FollowUp Processing VAI-SEUTHE ADJ65 (YoM 2001, Siemens S7-400)
- Process visualisation (Windows PC)

Line Specifications:

- max. yield strength: 600 N/mm²
- max. tensile strength: 800 N/mm²
- strand alignment: bottom-line

Strip Preparation VAI-SEUTHE BV 200-8

- incl. double decoiler, coil opener, straightening unit, strip shear, cross welding machine, annealing station, infeed driver, strip loop, outfeed driver and strip sling
- strip edge planer: 0 degrees, 5 degrees
- max. speed: 250 m/min (without straightener)
- max. speed: 200 m/min (with straightener)

Core Unit ABBEY(forming unit, welding machine and calibrating unit):

- incl. Ebbey Etna, VAI Seuthe RS65/8.0-100, Elotherm Eloweld 500
- Welding tube diameter ratio: 70:1 to 6:1
- max. HF power: 450 kW

Vendedor:

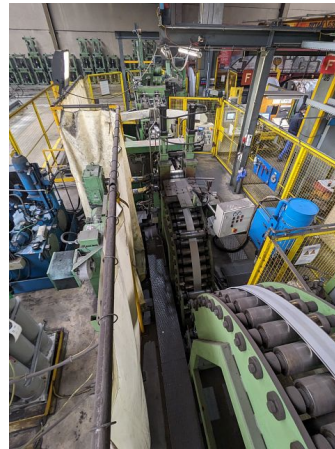
ProdEq Trading GmbH
 Marc Schönenberger
 Reckholder 1, 9527 Niederhelfenschwil, Switzerland
 +41 71 948 70 60
 marc.schoenenberger@prodeq.ch

Fotos y documentos

Nº de referencia 44196



Übersicht Bandanlage



Schleufe



Haspel



Schleifensteuerung



Band Stoss schweißen



Übersicht Schweissanlage